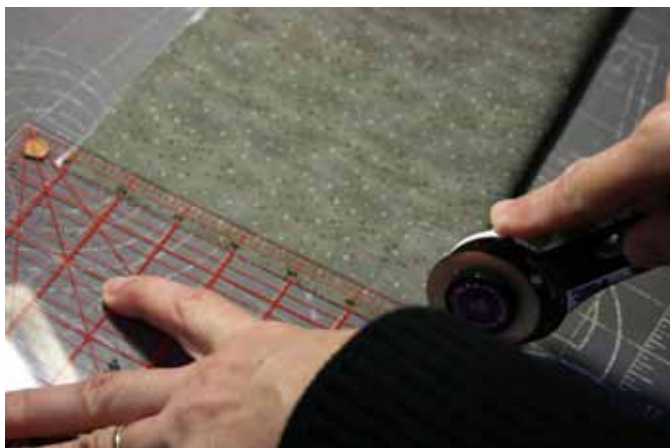
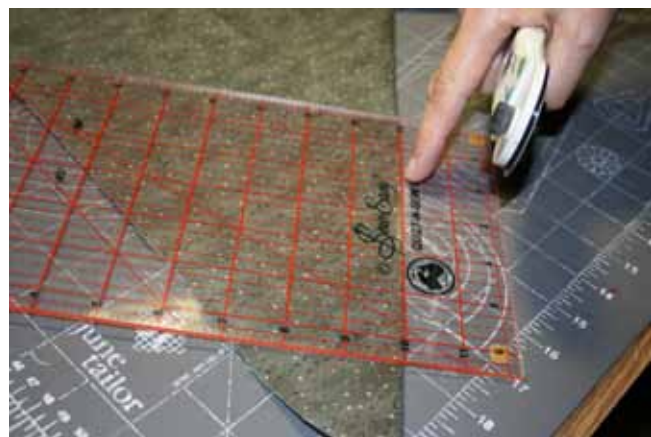


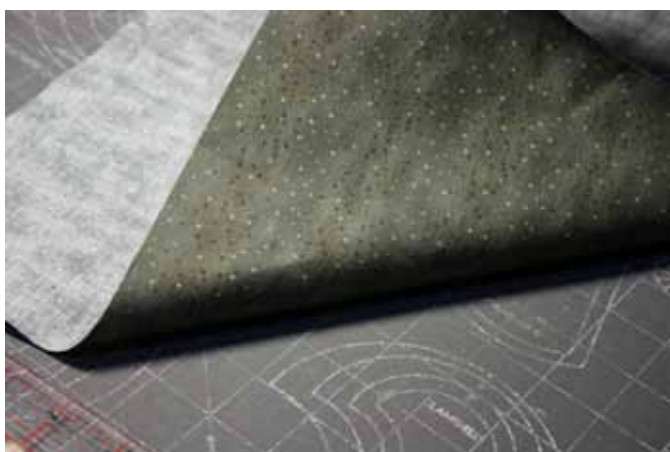
How to Make Bias Binding



1) Press the piece of fabric and if there is selvage on your piece of fabric now is the time to cut it off.



4) Make sure that the straight edge of the ruler is aligned with the bottom of the piece of fabric.



2) I like to start with a square of fabric, fold the fabric in half diagonally



5) Double check that the cutting edge of the ruler is on the crease



3) Fingerpress along the fold so you can see the crease. Open the fabric out and refold diagonally the other way.



6) Cut the strips $1\frac{1}{4}$ " wide.



7) You may need to cut several strips





8) Line up the cut strips ready to join together



9) Join the strips to make required length, in this case approx. 20"

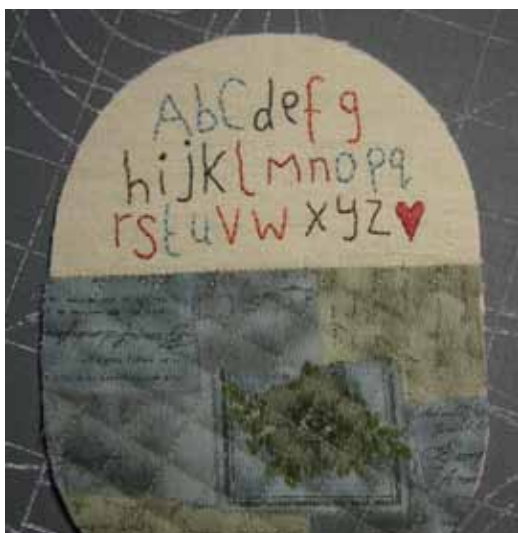


11) Press down approx. $\frac{1}{4}$ " along entire length of bias strip.

10) Press the seams open



ONLINE SHOP www.littlequiltstore.com.au
EMAIL sales@littlequiltstore.com.au
BLOG www.lynetteandersondesigns.typepad.com



12) Once the quilting has been completed, trim the piece down to size.

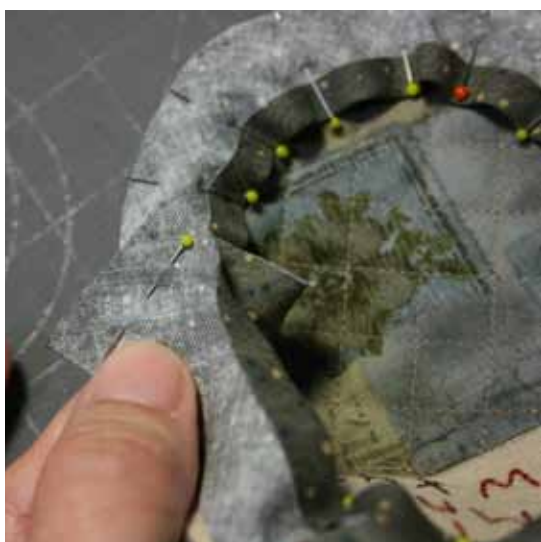


13) With right sides together pin the bias to the front of the purse

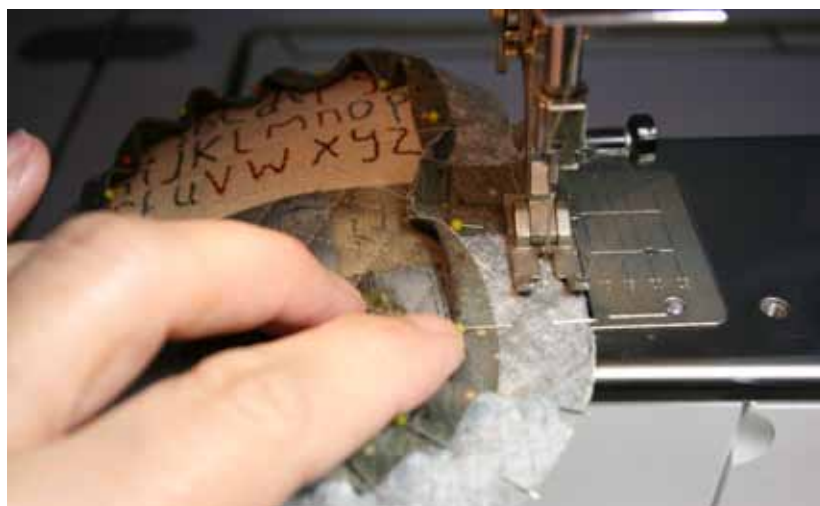


14) You will need to join the start and the end of the bias, to do this I pin them to check the length is correct and add a $\frac{1}{4}$ " seam allowance and fingerpress to make a crease where the fold line is.

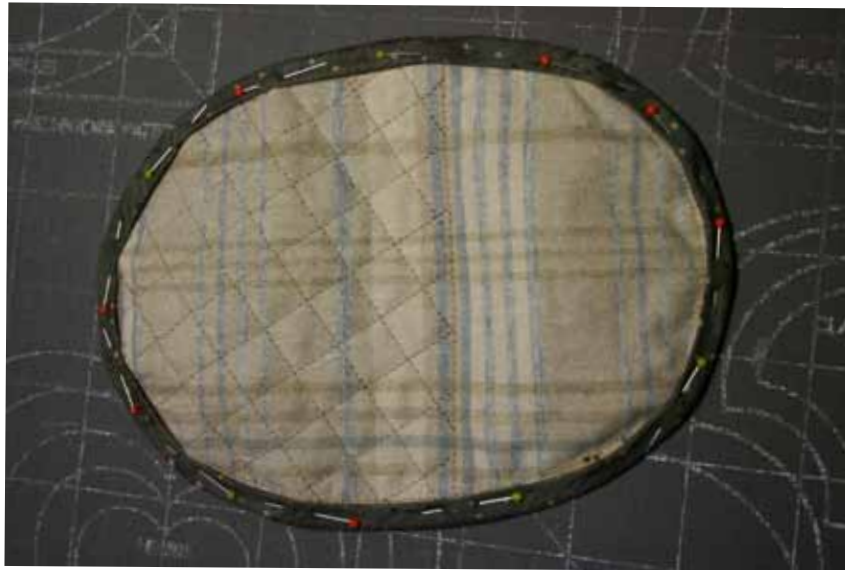
16) Stitch seam.



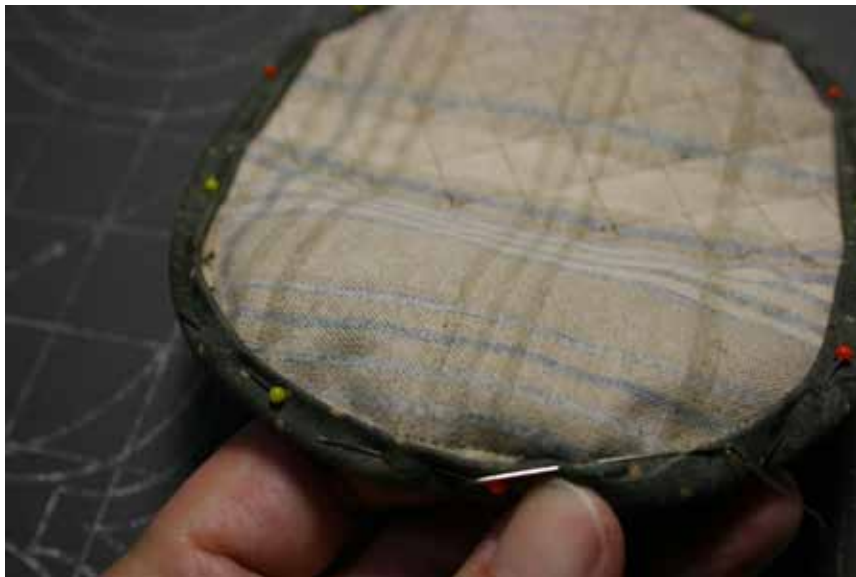
15) Then I remove some the pins, open out the $\frac{1}{4}$ " seam allowance and carefully pin along the fold line.



17) Stitch the bias to the front of the purse.



18) Remove all the pins and turn bias over edge to back. Pin the bias in place.



19) Hand stitch the bias to the wrong side of the purse.



ONLINE SHOP www.littlequiltstore.com.au
EMAIL sales@littlequiltstore.com.au
BLOG www.lynetteandersonsdesigns.typepad.com