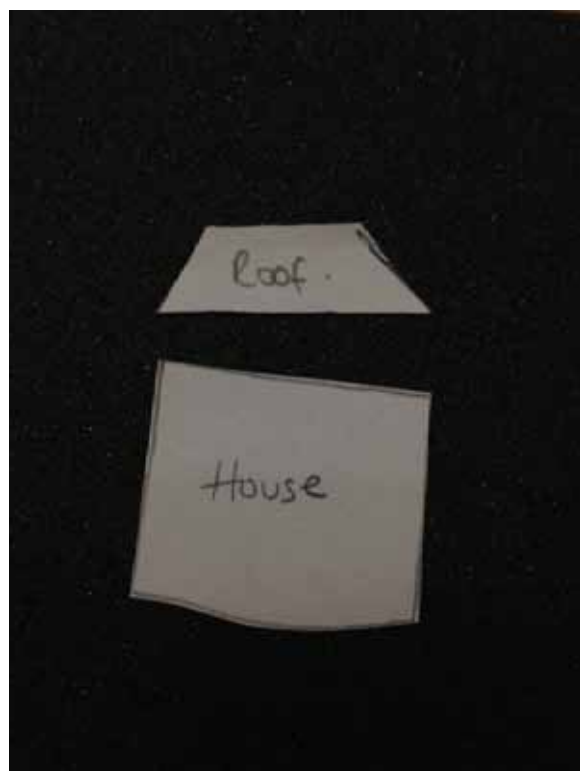
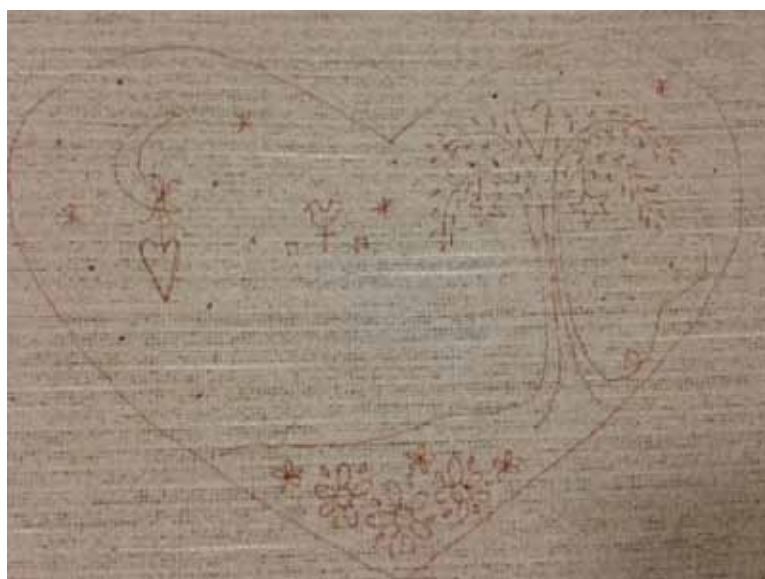


How to do needleturn applique



1) Have fun choosing and collecting the threads, fabrics and tools that you will need for this project.

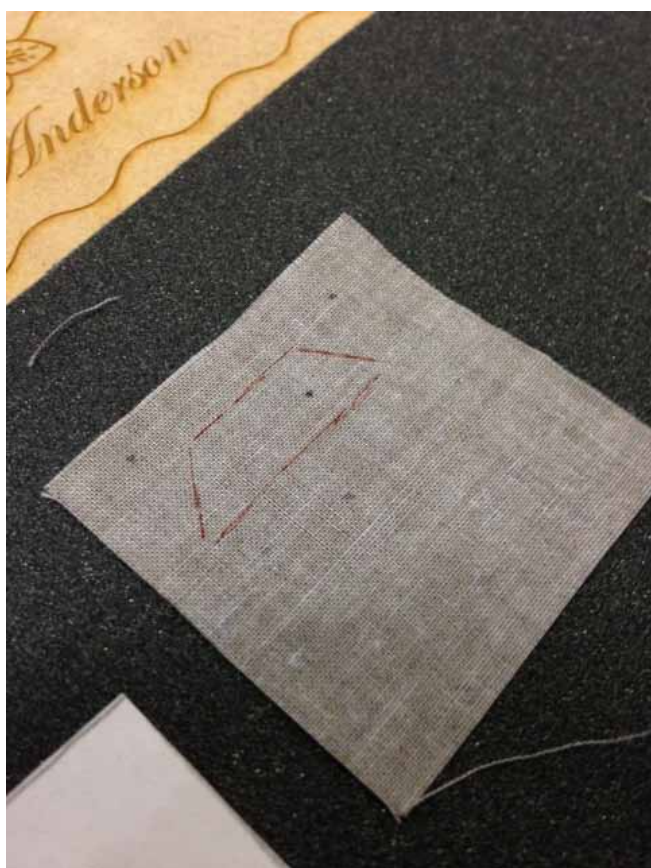
2) Using either a window or a light box transfer the stitchery design onto your chosen background fabric



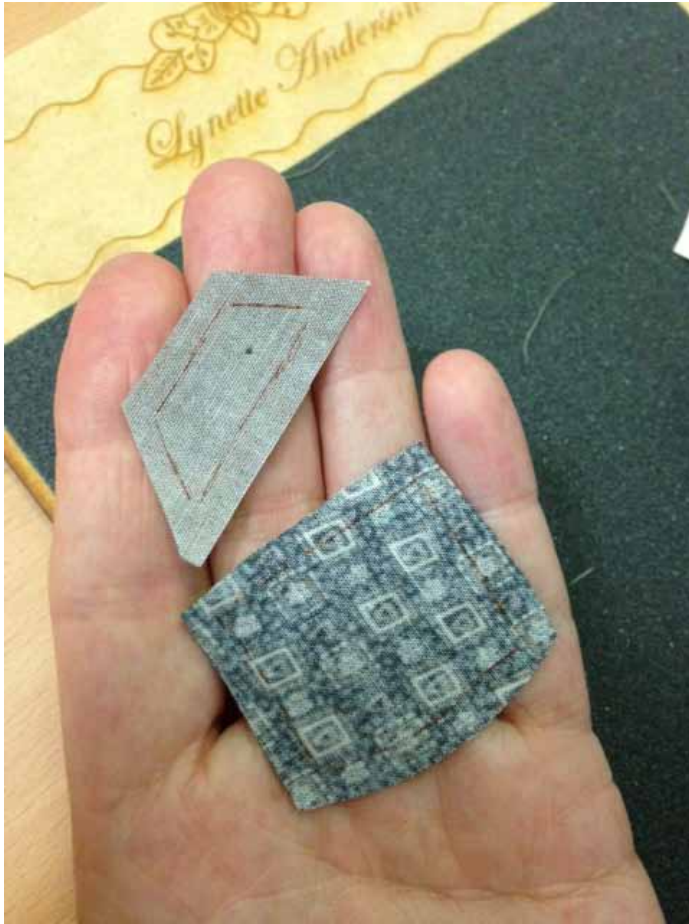
3) As you are probably only going to make this project once or twice, templates made from paper will be fine. I cut mine out from the pattern sheet.



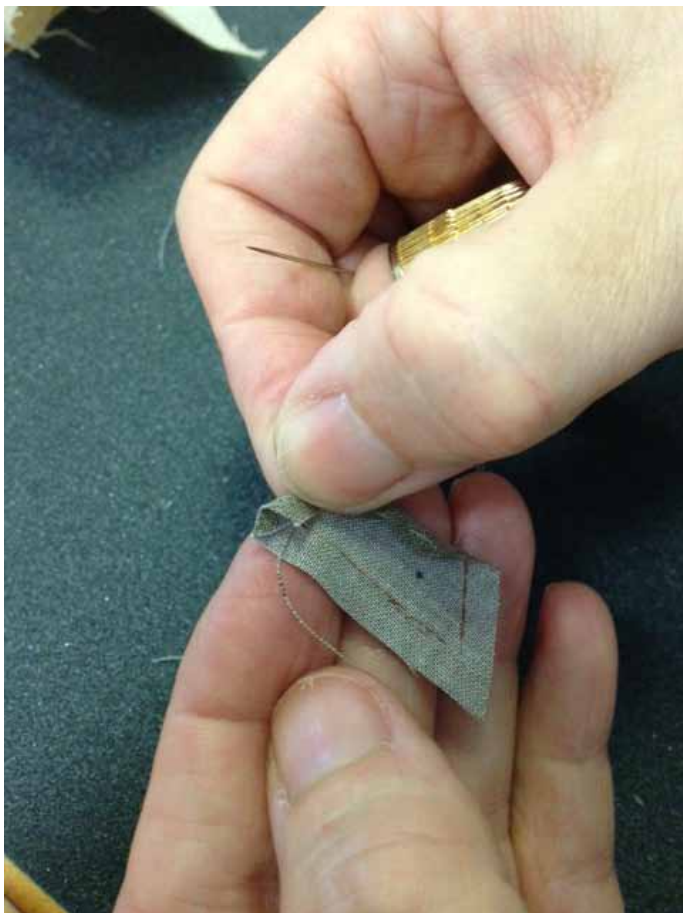
4) Working on a sandpaper board helps prevent the fabrics from moving as you trace around the templates. With right side of chosen fabrics facing down and the template also face down use a suitable fabric marking pen to trace around each template.



5) I like to use a fine tipped permanent marker such as a Pigma or Zig pen.



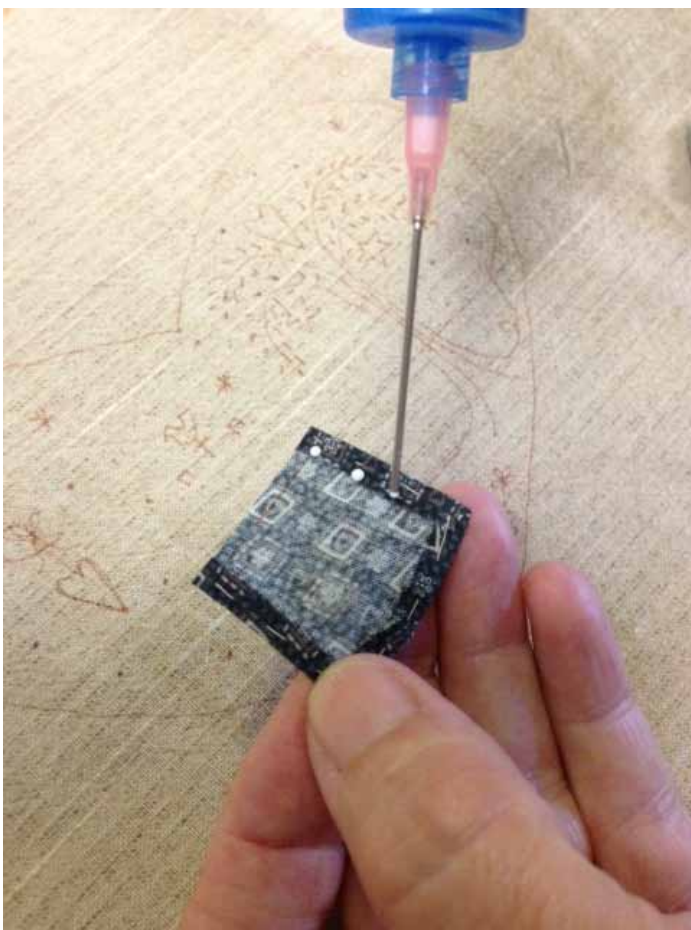
6) Cut out approx. $\frac{1}{4}$ " beyond the drawn line (the drawn line must be on the wrong side of the fabric for this technique).



7) Using regular sewing thread in your needle, turn under the seam allowance to the drawn line and tack/baste in place.



8) Once the seam allowance has been turned under and tacked/basted I place you can press each piece. I like to press first on the wrong side taking care that curves and nice and smooth and points and nice and pointed.

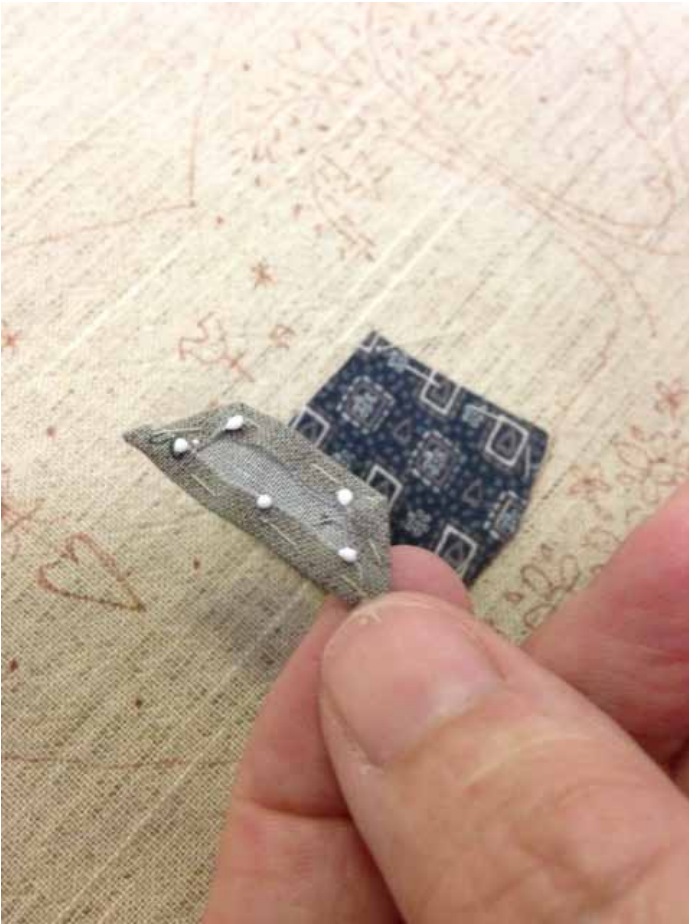


9) Squeeze a small drop of Roxannes Glue Baste It onto the seam allowance of each shape that is to be appliquéd.

10) Glue once piece at a time and put into position before gluing the next piece.



11) Glue and position the next piece.



12) Don't worry if a little piece of the house is sticking out beyond the roof, you can tuck it in as you stitch.



13) Blind hem stitch applied shapes in to position, then remove tacking/basting stitches.

