

Stepping Stones

Fabrics: "Bread & Butter by Lynette Anderson"
from RJR Fabrics

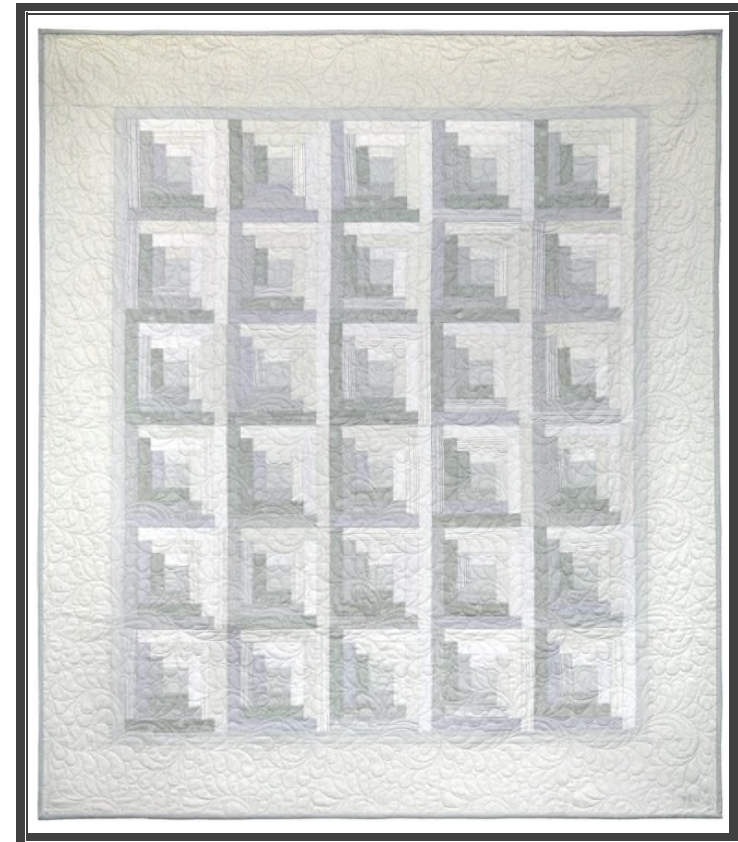
Light #1 - #1854-5	1/4 yard
Light #2 - #1895-1	1/4 yard
Light #3 - #1896-1	1/4 yard
Light #4 - #1898-1	1/4 yard
Light #5 - #1899-1	1/4 yard
Light #6 - #1933-5	1/4 yard
Light #7 - #1897-1	1 1/2 yards
Dark #1 - #1895-2	1/4 yard
Dark #2 - #1896-2	1/4 yard
Dark #3 - #1897-2	1/4 yard
Dark #4 - #1898-2	1/4 yard
Dark #5 - #1899-2	1/4 yard
Dark #6 - #1854-6	1/2 yard
Dark #7 - #1933-6 (binding)	1/2 yard
Backing:	4 yards

Notions: Thread for piecing and quilting,

Quilt made by Kay Harmon
Quilted by Darlene Szabo of Sew Graceful Quilting

The information in this pattern is presented in good faith.
Every effort has been taken to assure the accuracy herein.
This pattern may not be reproduced in any form, either electronic
or hard copy. The finished product may not be used for mass
retail, commercial, or wholesale purposes, markets, or trade
shows without written permission.

Stepping Stones

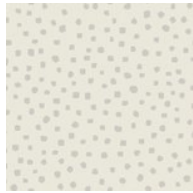


featuring fabric collections from

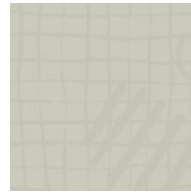


Stepping Stones

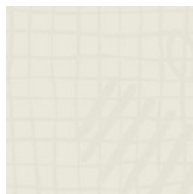
Color Card



Light #1
#1854-5



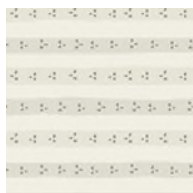
Dark #1
#1895-2



Light #2
#1895-1



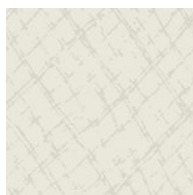
Dark #2
#1896-2



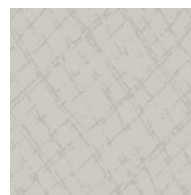
Light #3
#1896-1



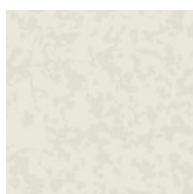
Dark #3
#1897-2



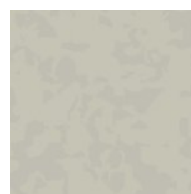
Light #4
#1898-1



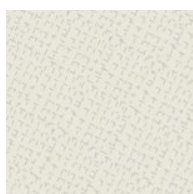
Dark #4
#1898-2



Light #5
#1899-1



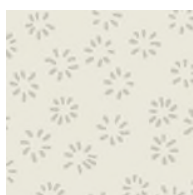
Dark #5
#1899-2



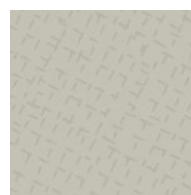
Light #6
#1933-5



Dark #6
#1854-6



Light #7
#1897-1



Dark #7
#1933-6

Stepping Stones

CUTTING INSTRUCTIONS:

From 1854-005, 1895-001, 1896-001, 1898-001, 1899-001, 1933-005, cut

30—1 1/2" x 2 1/2" strips

60—1 1/2" x 4 1/4" strips

60—1 1/2" x 6 1/2" strips

30—1 1/2" x 8 1/2" strips

From 1895-002, 1896-002, 1897-002, 1898-002, 1899-002, cut

60—1 1/2" x 3 1/2" strips

60—1 1/2" x 5 1/2" strips

60—1 1/2" x 7 1/2" strips

From 1/2 yard of 1854-006, cut

30—2 1/2" x 2 1/2" squares

5—1 1/2" strips

From 1 1/2 yard of 1897-001 for outer border, cut

4—6" wide strips lengthwise

From 1/2 yard of 1933-006, cut

6—2 1/4" strips

BLOCK CONSTRUCTION:

Blocks finish 8" x 8".

Starting with the 2 1/2" x 2 1/2" center square and using the diagram below, sew a 1 1/2" x 2 1/2" light strip to one side of the center. Sew remaining strips in a clockwise manner, referring to the diagram.

Sew a dark 1 1/2" x 3 1/2" strip to the previous unit.

Sew a dark 1 1/2" x 3 1/2" strip to the previous unit

Sew a light 1 1/2" x 4 1/2" strip to the previous unit

Sew a light 1 1/2" x 4 1/2" strip to the previous unit

Sew a dark 1 1/2" x 5 1/2" strip to the previous unit

Sew a dark 1 1/2" x 5 1/2" strip to the previous unit

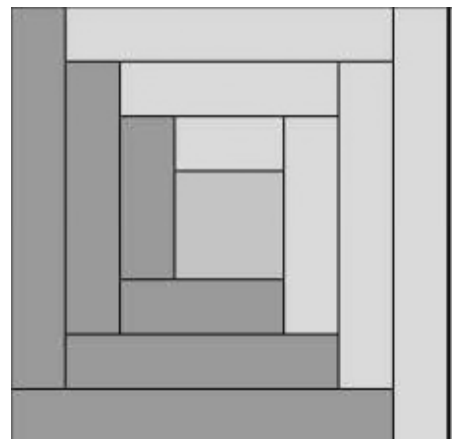
Sew a light 1 1/2" x 6 1/2" strip to the previous unit

Sew a light 1 1/2" x 6 1/2" strip to the previous unit

Sew a dark 1 1/2" x 7 1/2" strip to the previous unit

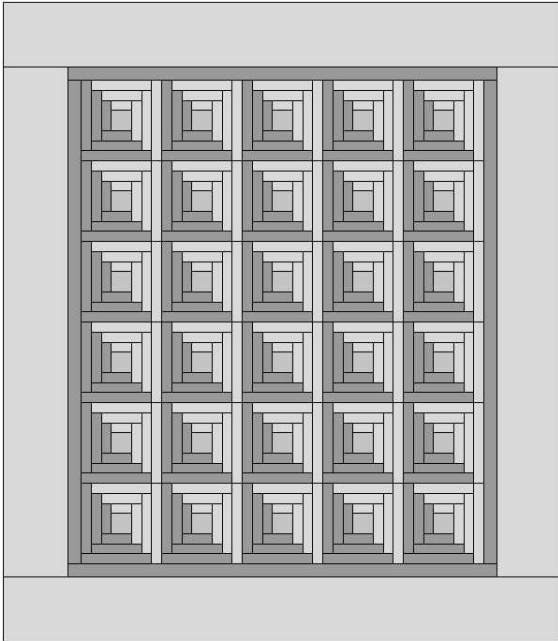
Sew a dark 1 1/2" x 7 1/2" strip to the previous unit

Sew a light 1 1/2" x 8 1/2" strip to the previous unit



QUILT CONSTRUCTION:

After all blocks have been constructed and using the diagram below, sew blocks into rows. Then sew rows together.



Sew the 5—1 1/2" inner border strips to make one long strip. Measure your quilt top and cut side borders to that measurement. Sew to sides. Measure again and cut top and bottom borders to that measurement. Sew to top and bottom.

Do the same for the outer borders.

Quilt as desired. Bind.