

# Striped Flowers

A Free Pattern Featuring Fabrics by

Lynette Anderson Designs



Quilt Design and Instructions by: Cate Tallman-Evans



Sample Made by Kay Harmon/Quilted by Darlene Szabo

**Finished Quilt Size: 81" x 81"**

To view more from Lynette Anderson Designs, please visit  
[www.lynetteandersondesigns.com.au](http://www.lynetteandersondesigns.com.au)

OR

Lynette's Blog at  
<http://www.lynetteandersondesigns.typepad.com/>

**LECIEN**

[www.lecien.co.jp/en/hobby/](http://www.lecien.co.jp/en/hobby/)

©2012 Lynette Anderson Designs

**LECIEN U.S.A., Inc.**

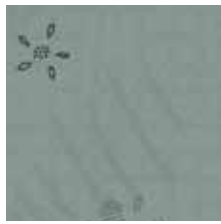
[www.lecienusa.com](http://www.lecienusa.com)  
[info@lecienusa.com](mailto:info@lecienusa.com)

# Striped Flowers

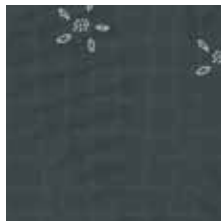
## Materials for the Quilt



30527-10  
1 3/8 yards



30527-60  
1 fat quarter



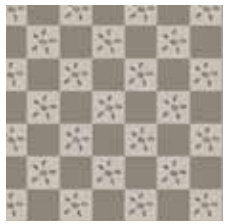
30527-70  
1 fat quarter



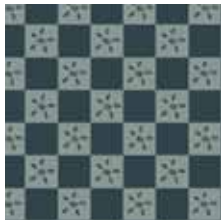
30527-80  
1 fat quarter



30527-90  
1 fat quarter



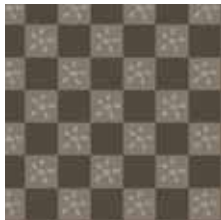
30528-10  
1 fat quarter



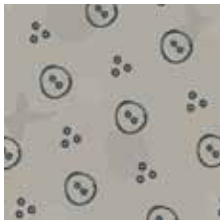
30528-70  
1 fat quarter



30528-71  
1 fat quarter



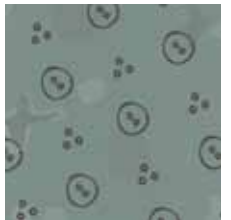
30528-80  
1 fat quarter



30529-10  
2 fat quarters



30529-11  
1 fat quarter



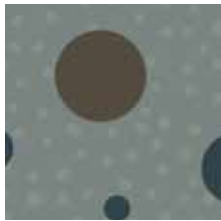
30529-60  
1 fat quarter



30529-70  
1 fat quarter



30529-100  
1 1/2 yards  
(includes binding)



30530-60  
1 fat quarter



30530-70  
1 fat quarter



30530-80  
1 fat quarter



30531-10  
1 3/8 yards



30531-60  
1 fat quarter



30531-70  
1 fat quarter



30531-80  
1 fat quarter



30531-90  
1 fat quarter



30532-60  
1 fat quarter



30532-61  
1 fat quarter



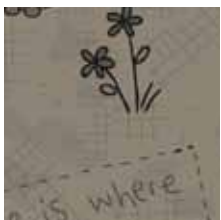
30532-70  
1 fat quarter



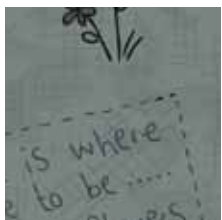
30532-80  
1 fat quarter



30532-90  
1 fat quarter



30533-11  
1 fat quarter



30533-60  
1 fat quarter



30533-80  
1 fat quarter

# Striped Flowers

## Additional Materials

Template plastic  
All supplies necessary for your chosen method of appliqué  
Usual sewing and rotary cutting supplies  
5¼ yards of fabric for quilt backing  
89" x 89" piece of batting

## Cutting Instructions

*Note: All strips are cut across the width of the fabric from selvage edge to selvage edge.*

**From EACH of the (2) cream fabrics, cut:**

- (2) 12½" strips. Recut into (6) 12½" x 12½" squares.
- (5) 3½" strips. Recut into (46) 3½" x 3½" squares.

**From the black button print (30529-100), cut:**

- (9) 2¼" strips for binding.
- (13) 2" strips. Set aside (7) strips for the inner border. Crosscut (6) strips in half to yield a total of (12) 2" x 21" strips. Reserve all remaining fabric for the appliqué flower centers.

**From the light gray button print (30529-10), cut:**

- (11) 2" x 21" strips.

*Please note: cutting instructions for all remaining fabrics are given by color grouping. Refer to the quilt pictured on the cover for fabric placement or use any arrangement of your choice.*

**From the (6) assorted dark blue/green fat quarters, cut a total of:**

- (12) 3½" x 9½" and (4) 3½" x 6½" pieces and (64) 3½" x 3½" squares.

**From the (7) assorted light blue/green fat quarters, cut a total of:**

- (10) 3½" x 9½" and (2) 3½" x 6½" pieces and (64) 3½" x 3½" squares.

**From the (5) assorted dark brown fat quarters, cut a total of:**

- (12) 3½" x 9½" and (38) 3½" x 3½" squares.

**From the (5) assorted light brown fat quarters, cut a total of:**

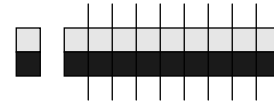
- (10) 3½" x 9½" and (2) 3½" x 6½" pieces and (38) 3½" x 3½" squares.

**From the (3) uncut checked fat quarters and the unused portions of all other fat quarters, cut a total of (120) 1" x 21" strips for the striped flower appliques.**

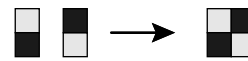
## Sewing Instructions

*Note: All seams are sewn using ¼" seam allowance with right sides held together and raw edges even.*

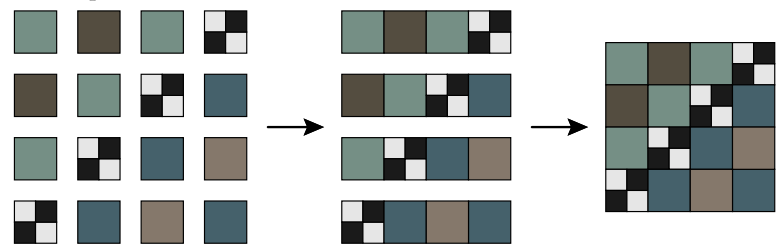
1. Sewing lengthwise, stitch a 2" x 21" light gray button print strip to a 2" x 21" black button print strip. Press the seam toward the black strip to make a 3½" high strip set. Repeat to make a total of (11) strip sets. From these strip sets, cut a total of (104) 2" wide segments.



2. Stitch together two strip set segments from step 1, noting orientation, to yield (1) 3½" x 3½" four-patch block. Repeat to make a total of (52) four-patch blocks.

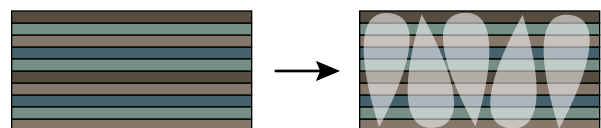


3. Arrange: (2) 3½" light brown, (2) 3½" dark brown, (4) 3½" light blue/green, and (4) 3½" dark blue/green squares, and (4) 3½" four-patch blocks, into (4) rows with (4) units in each row. Please note the orientation of the four-patch blocks and the correct color placement as shown in the diagram below. Stitch the units into rows. Sew the rows together to make (1) 12½" x 12½" pieced block. Repeat to make a total of (13) pieced blocks.



## Appliqué

1. Using template plastic and the paper patterns provided, make templates for the flower petal and flower center motifs. Please note that the paper patterns are full size, are not reversed and do not include seam allowances.
2. Using the flower center template and the black button print fabric, prepare (12) flower center motifs as required for your preferred method of appliqué.
3. Sewing lengthwise, stitch together (10) assorted 1" x 21" strips. Press all seams in one direction to yield a 5½" high strip set. Repeat to make a total of (12) strip sets. Using the flower petal template and these strip sets prepare, (60) flower petal motifs as necessary for your preferred method of appliqué. Refer to the diagram below for orienting the template on the strip set, noting that the petals are rotated slightly to fit on the strip set.



4. Using the quilt pictured on the cover as a guide, layer (5) flower petal motifs and (1) flower center motif on top of a 12½" cream square, with the flower units centered on the square. Appliqué all raw edges using the method of your choice. Repeat to make a total of (12) appliqué flower squares.

# Striped Flowers

1. Arrange the pieced blocks and appliqué blocks into (5) rows with (5) blocks in each row, alternating the two types of blocks as shown in the quilt pictured on the cover. Stitch the blocks into rows and sew the rows together to complete the quilt center.
2. Trim the selvages from the 2" black button print inner border strips and sew the strips together end to end to make a long 2" strip. From this long strip, cut (2) 60½" and (2) 64½" lengths. Stitch the shorter lengths to the left and right sides of the quilt top. Stitch the longer lengths to the top and bottom.

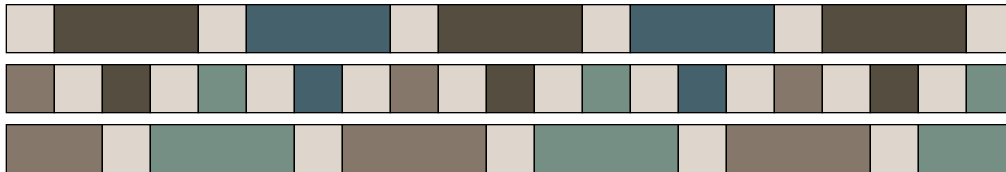
3. Referring to the diagram below, arrange the pieces listed as shown:

3½" squares: (21) cream, (3) dark brown, (3) light brown, (3) light blue/green, (2) dark blue/green

3½" x 6½" pieces: (1) light brown, (1) light blue/green

3½" x 9½" pieces: (3) dark brown, (2) light brown, (2) light blue/green, (2) dark blue/green.

Stitch the units into rows and sew the rows together. Repeat to make a second unit. Stitch these pieced borders to the left and right sides of the quilt top, noting orientation.



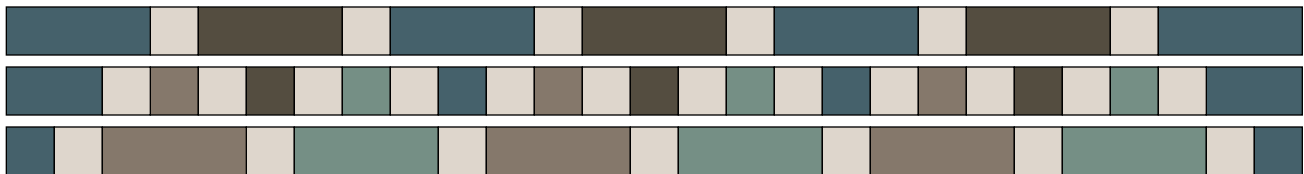
4. Referring to the diagram below, arrange the pieces listed as shown:

3½" squares: (25) cream, (3) dark brown, (3) light brown, (3) light blue/green, (4) dark blue/green

3½" x 6½" pieces: (2) dark blue/green

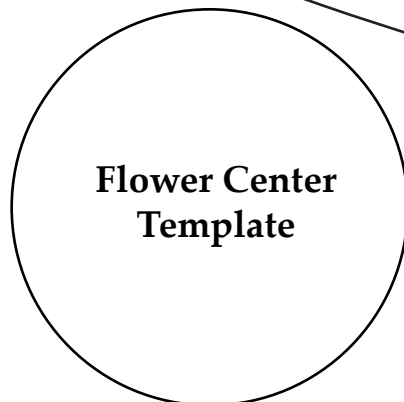
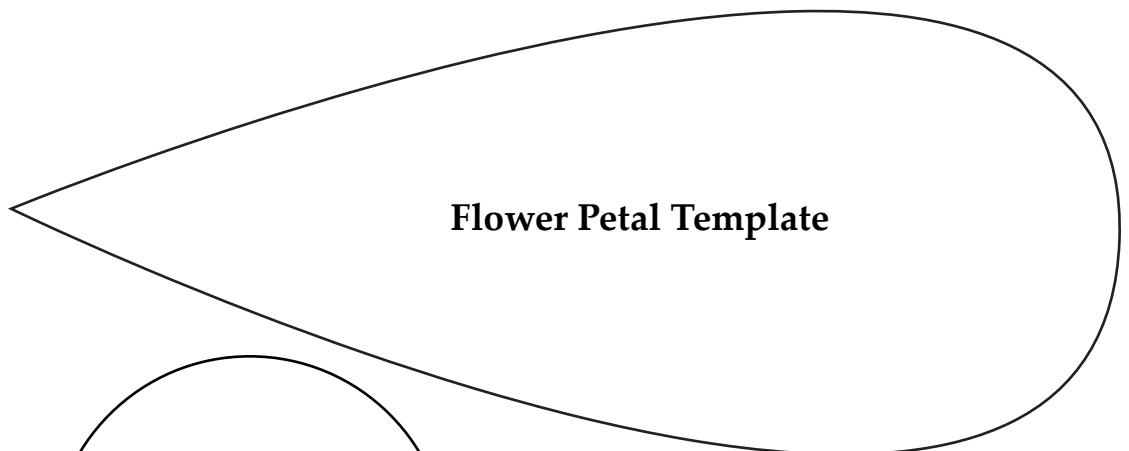
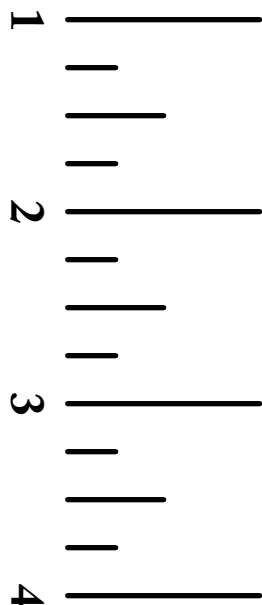
3½" x 9½" pieces: (3) dark brown, (3) light brown, (3) light blue/green, (4) dark blue/green.

Stitch the units into rows and sew the rows together. Repeat to make a second unit. Stitch these pieced borders to the top and bottom of the quilt top, noting orientation.



5. Layer the completed quilt top with batting and backing and quilt as desired.

6. Bind the finished quilt with the 2¼" black button print strips.



**Flower Petal Template**

**Flower Center Template**

Templates are full size, are not reversed, and do not include seam allowance. Be sure "do not scale" button is selected during printing.