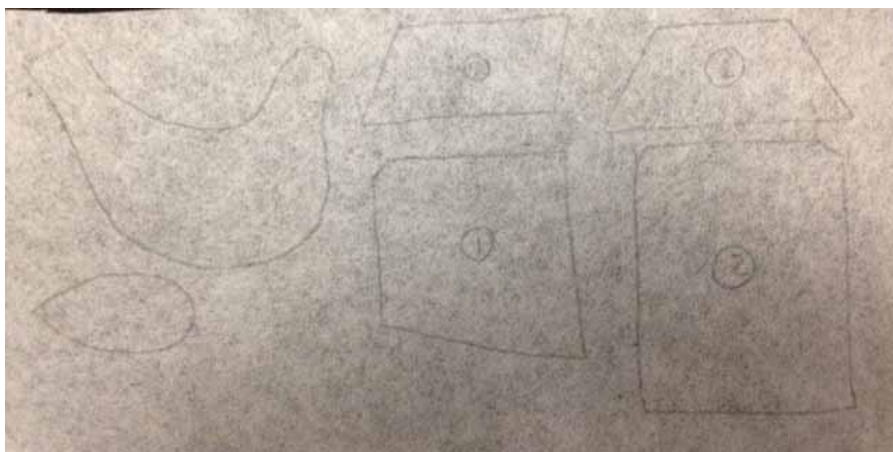


Apliquick Tutorial



Gather Your Tools:

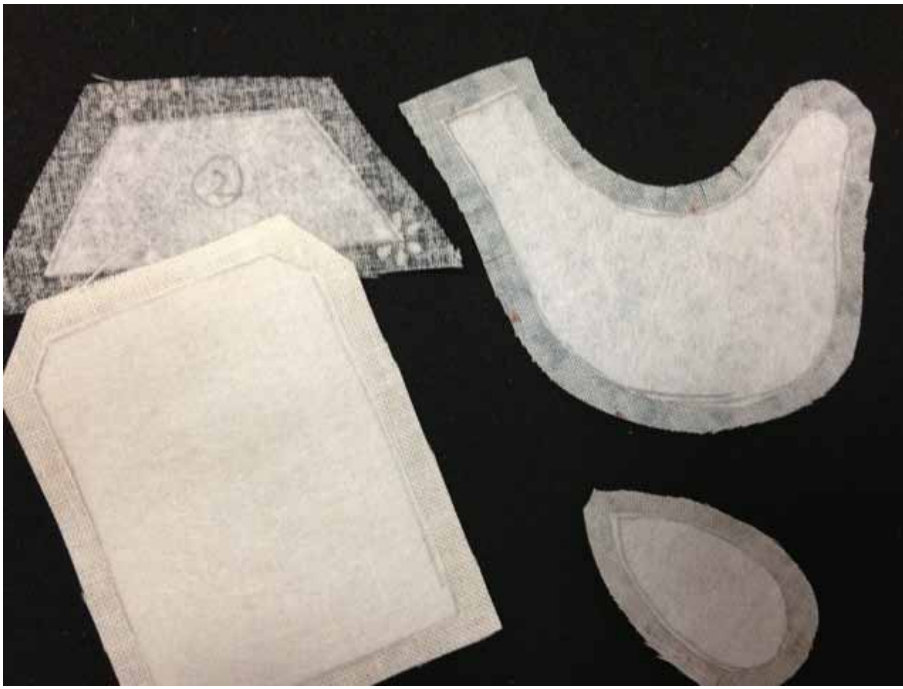
- Black non slip mat
- Apliquick® Tools
- Fabric scissors (Lynette uses and recommends Karen Kay Buckley Scissors and not just because they have purple handles!)
- Suitable fabric marking pen/pencil
- Water soluble single sided fusible stabilizer
- Glue pen, such as Sewline or Fons and Porter
- Fabrics



- 1) Trace the applique shapes (reversed) onto the non shiny side of the applique paper, leave a scant $\frac{1}{4}$ " space between each shape.



- 2) Cut out each shape on the drawn line, cut accurately.



- 3) Place each shape glue side down on the wrong side of your chosen fabrics, leaving a scant $\frac{1}{4}$ " between the shapes. Bond in place with hot iron. Cut out with a scant $\frac{1}{4}$ " beyond the edge of the applique paper.



- 4) Clip all concave (inwards) curves to the line, this will help ensure that these curves look smooth once you turn the edges under.



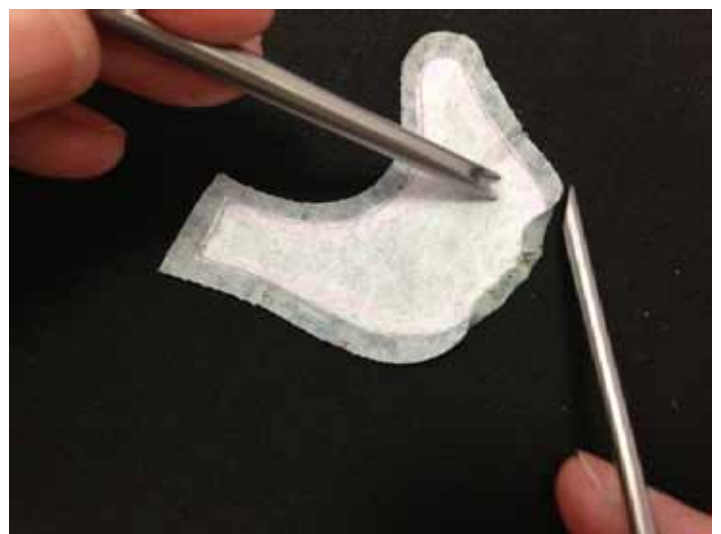
- 5) Using a glue pen put a small quantity of glue around the edge of each applique shape. Try to keep the glue on the applique paper.





ONLINE SHOP www.littlequiltstore.com.au
EMAIL sales@littlequiltstore.com.au
BLOG www.lynetteandersonsdesigns.typepad.com

- 6) Take the Appliquick® tools, you will notice that there are two different tools. The one with the forked end is the one to use in your left hand (if you are right handed) to hold steady the applique shape. The other tool has a flat iron shape and is used in your right hand to roll and press the seam allowance from the front to the back where the glue will then hold it in place.
- 7) Once you have applied some glue to the edges of the applique paper you need to work fairly quickly to smooth the fabric over the edge of the paper using the flat iron tool and carefully press in place. If you find the glue has dried simply apply more where needed.





- 8) Once you have turned all the seam allowance under you are ready to position them on the background. Pin or glue the applique shapes in position using Roxanne's Glue Baste-It and stitch using a blind he stitch and matching thread.

*TIP If you find you have too much seam allowance to turn the edges smoothly then trim it down a little.



ONLINE SHOP www.littlequiltstore.com.au
EMAIL sales@littlequiltstore.com.au
BLOG www.lynetteandersondesigns.typepad.com

